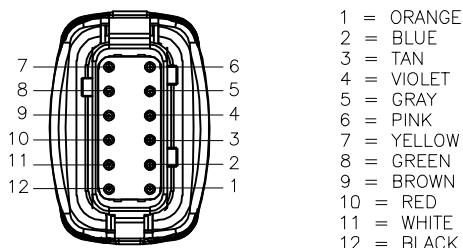
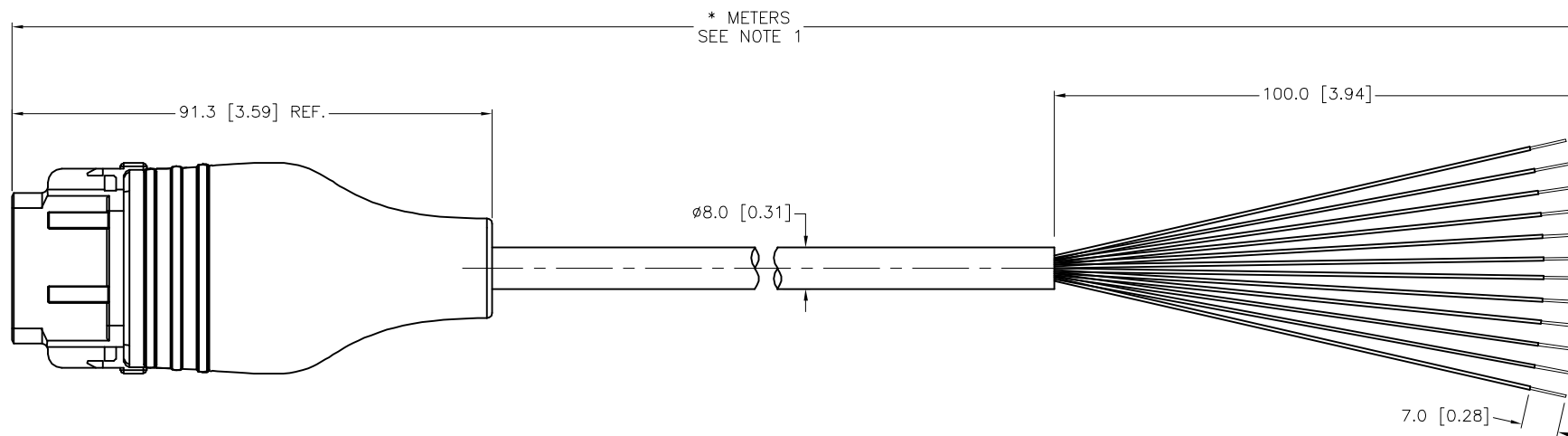
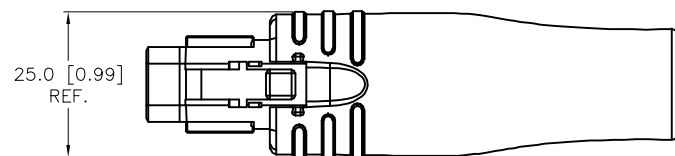


## FEMALE END VIEW



## SPECIFICATIONS

|                               |                     |
|-------------------------------|---------------------|
| DEUTSCH CONNECTOR             | DTM06-12SA-E007     |
| DEUTSCH WEDGELOCK             | WM-12S              |
| DEUTSCH TERMINALS             | 0462-201-20141      |
| RATED CURRENT [A]             | 4.0 A               |
| MOLDED HEAD MATERIAL/COLOR    | TPU/BLACK           |
| OUTER JACKET MATERIAL/COLOR   | TPE/BLACK           |
| CONDUCTOR INSULATION MATERIAL | POLYESTER ELASTOMER |
| NUMBER OF CONDUCTORS [AWG]    | 12x22 AWG           |
| PROTECTION CLASS              | IP67                |

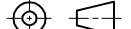


| CABLE LENGTH                | TOLERANCE*  |
|-----------------------------|---|
| ALL LENGTHS                 | + 4% (OR 50mm) OF LENGTH<br>- 0% (OR 0mm) OF LENGTH<br>WHICHEVER IS GREATER |
| STRIP LENGTH                | TOLERANCE*  |
| 0-7mm                       | ±0.5mm  |
| 8-29mm                      | ±1.0mm  |
| 30-49mm                     | ±2.0mm  |
| 50-69mm                     | ±3.0mm  |
| 70-100mm                    | ±4.0mm  |
| OVER 100mm                  | ±5.0mm  |
| *UNLESS OTHERWISE SPECIFIED |   |

## NOTES:

1. "\*" INDICATES CABLE LENGTH IN METERS. CONTACT TURCK TO ORDER SPECIFIC LENGTHS.

## SOURCE DRAWING - FOR REFERENCE ONLY

|   |   |   |  |       |          |                                       |              |
|---|---|---|--|-------|----------|---------------------------------------|--------------|
| RELATED DOCUMENTS<br>1.<br>2.<br>3.<br>4. | 3RD ANGLE<br>PROJECTION   | <div>THIS DRAWING IS<br/>CONFIDENTIAL AND THE<br/>PROPERTY OF TURCK<br/>INC. USE OF THIS<br/>DOCUMENT WITHOUT<br/>WRITTEN PERMISSION IS<br/>PROHIBITED.</div> <div>TURCK</div> <div>3000 CAMPUS DRIVE<br/>MINNEAPOLIS, MN 55441<br/>1-800-544-7769<br/>(763) 553-7300<br/>(763) 553-0708 fax<br/>www.turck.us</div> |  |       |          |                                       |              |
|   |  |   |  |       |          |                                       |              |
|   |   |   |  |       |          |                                       |              |
|   |   |   |  |       |          |                                       |              |
| MATERIAL                                  | ALL DIMENSIONS<br>DISPLAYED ON THIS<br>DRAWING ARE FOR<br>REFERENCE ONLY              | DRFT  | TV   | DATE  | 12/11/17 | DESCRIPTION<br><br>DTM06-12SA-0999-*M |              |
| SEE SPECIFICATIONS                        |   | APVD  | A.A.   | SCALE | 1=1.3    |                                       |              |
| FINISH                                    |   | CONTACT TURCK<br>FOR MORE<br>INFORMATION  | UNIT OF MEASUREMENT<br><br>MILLIMETER [ INCH ] |       |          | IDENTIFICATION NO.                    | REV<br><br>B |
| SEE SPECIFICATIONS                        |   |   | DO NOT SCALE THIS DRAWING                      |       |          | FILE: 777040881                       | SHEET 1 OF 1 |

|     |                 |     |          |         |
|-----|-----------------|-----|----------|---------|
| B   | UPDATE END VIEW | RDS | 04/15/22 | 77547   |
| REV | DESCRIPTION     | BY  | DATE     | ECO NO. |